

TRAVERTINE

Sizes

*12x12 ◇16x16 ●18x18 ■24x24 ▲2cm Slabs ◆3cm Slabs □Tumbled ►Pattern



Albastrino
★ ●



Amber
★ ●



Angelica Gold
★ ●



Cremino Beige
★ ●



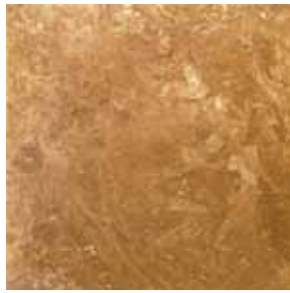
Durango Antique
★ ◇ ● ▲ ◆ □ ■



Durango Commercial
★ ◇



Durango Cream
★ ◇ ● ▲ ◆ □ ■ ►



English Walnut
★ ● □



Golden Sienna
★ ●



Mesquite
★ ◇ □



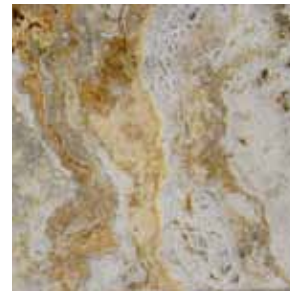
Noche Alpaca
★ ● □



Peach
★ ◇ ● ▲ ◆ □ ►



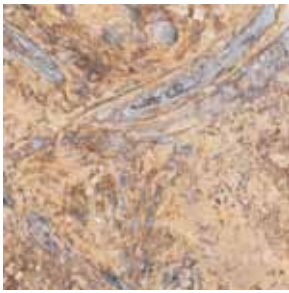
Philadelphia
★ ● ►



Porcini
►



Puebla
★ ◇ □



Red Travertine
★ ◇ ●



Roman Travertine
★ ◇ ● ▲ ◆



Rustic Walnut
●



Silver Travertine
★ ● ►



Stormy
★ ●



Tuscany Beige
★ ◇ ● ■ ►



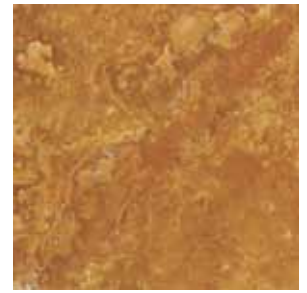
Tuscany Canyon Select
★ ● ■ □



Tuscany Chocolate
★ ● ■ ►



Tuscany Classic
★ ◇ ● ■ ► □



Tuscany Gold
★ ● ► □

TRAVERTINE

Sizes

★12x12 ◇16x16 ●18x18 ■24x24 ▲2cm Slabs ◆3cm Slabs □Tumbled ►Pattern



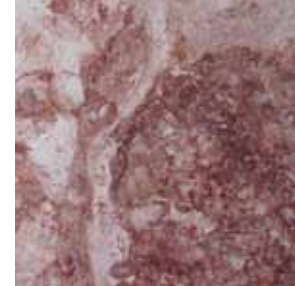
Tuscany Ivory
★◇●■▲◆



Tuscany Noche
★●■▲◆



Tuscany Platinum
★●■



Tuscany Rouge
★●□



Tuscany Scabas
●►



Tuscany Select
●



Tuscany Storm
★◇●■►



Tuscany Walnut
★◇●■►□



Tuscany Walnut Onyx
►



Vanilla
★●



Yurac
★●▲►



Crater Oro

Buyer/Owner must determine slip resistance suitability and maintainability for any of the material use. Natural stones are products of nature; we cannot be held liable in any cause of action resulting from their use in any form.

Aurora marble makes no expressed or implied warranty of merchandisability or fitness for any particular purpose. Natural stone products inherently lack uniformity and are subject to variation in aesthetics, color, shade, finish, tint, hardness, strength, slip resistance, density etc. Natural stone may be characterized by dry seams, pits, fossils. In polished and honed stones, these areas are often filled at the factory. In rustic or tumbled stones as well as with some honed limestones, these are often filled with grout during installation. In these instances, it may be necessary to refill these voids as part of a normal maintenance procedure. We recommend the use of a sealer for all natural stone applications. Any samples submitted are with the understanding that these qualities are inherent in the nature of the product and are not to be considered latent defects.

TRAVERTINE - PATTERNS

Sizes

■ *Pillow-Pattern* ▶ *Versailles Pattern* ● *Jumbo-Pattern* ▲ *Mini-Pattern*



Beige Wavy



Durango Pillowed Pat



Peach Travertine



Silver Travertine



Tuscany Beige



Tuscany Chateaux



Tuscany Chocolate



Tuscany Gold



Tuscany Imperium



Tuscany Ivory Onyx



Tuscany Scabas



Tuscany Storm



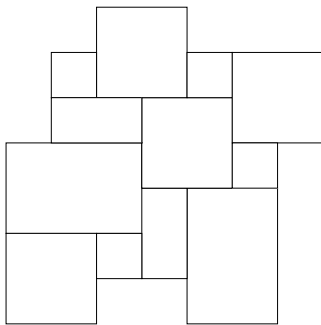
Tuscany Walnut



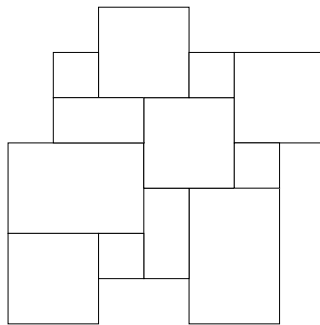
Tuscany Walnut Onyx



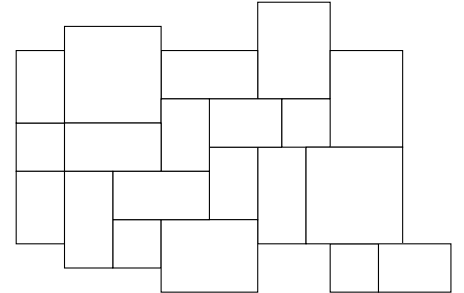
Yurac Straight Edge



● Jumbo Pattern 36 sq. ft.
(2) 12x12, (4) 12x24, (2) 24x24, (4) 24x36



▶ Versailles Pattern 16 sq. ft.
(4) 8x8, (2) 8x16, (4) 16x16, (2) 16x24



▲ Mini Pattern 10 sq. ft.
(5) 6x6, (6) 6x9, (3) 6x12,
(4) 9x12, (2) 12x12